



When?



What?



By whom?

When?	What?	By whom?
Before commissioning	Safety check	Provider/Service
Weekly	Clean/replace coarse filter, visual inspection of fine filter	User
Monthly or if heavily contaminated	Replace fine filter	User
Monthly	Battery quick test	User/Provider
Every 6 months during storage	Charge battery to 100 %	User/Provider
Every 6 months without bacterial filter	Replace the valve membrane (expiration)	Provider/Service
Every 12 months	Maintenance 1 Safety check	Provider/Service
Every 2 years	Maintenance 2	Provider/Service
After 15000 h blower run time or every 5 years	Maintenance 5	Provider/service

RUNNING A BATTERY QUICK TEST

The battery quick test should be done monthly as follows:

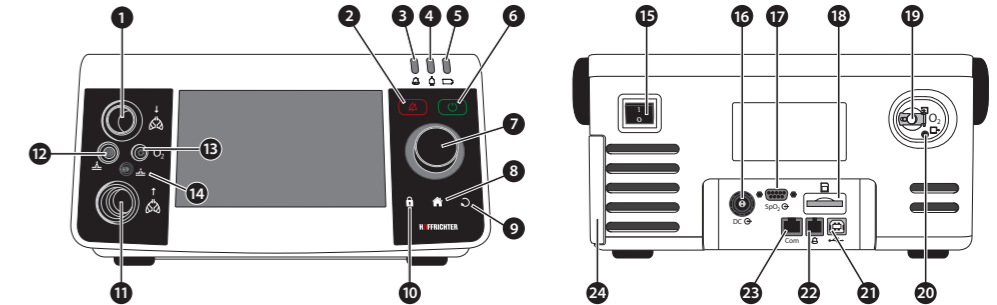
1. Make sure that the battery is fully charged (100 %).
2. Disconnect the device from the power supply and operate it for 1 hour on battery.
3. The battery passed the test, if the battery charge is higher than > 10 % after one hour and the "Low Internal Battery" message has not appeared. Should the battery charge fall below 10 % and the alarm "Internal battery low" message appear, then the battery has to be replaced by an authorized service representative.

Brief instructions

as of device software 1.100

This document does not replace the user's manual. Make sure to read the user's manual!

DEVICE DESCRIPTION



- | | | | |
|----|---------------------------------------|----|------------------------------------|
| 1 | Tube circuit connection - Inspiration | 15 | Switch device On/Off |
| 2 | Confirm audio alarm pausing for 2 min | 16 | DC connection |
| 3 | Alarm LED | 17 | SpO ₂ sensor connection |
| 4 | Power LED | 18 | SD card slot |
| 5 | Battery LED | 19 | Oxygen supply connection |
| 6 | Start/stop ventilation | 20 | Oxygen output |
| 7 | Multifunctional key MFK | 21 | USB interface (PC connection) |
| 8 | Switch to home screen | 22 | Remote alarm/nurse call |
| 9 | Escape | 23 | RS232 interface (accessories) |
| 10 | → MFK: Unlock/lock keys | 24 | Filter cassette |
| 11 | Tube circuit connection - Expiration | | |
| 12 | Control tube connection | | |
| 13 | Oxygen sensor cable connection | | |
| 14 | Pressure measuring tube connection | | |

©2014 HOFFRICHTER GmbH
All rights reserved.

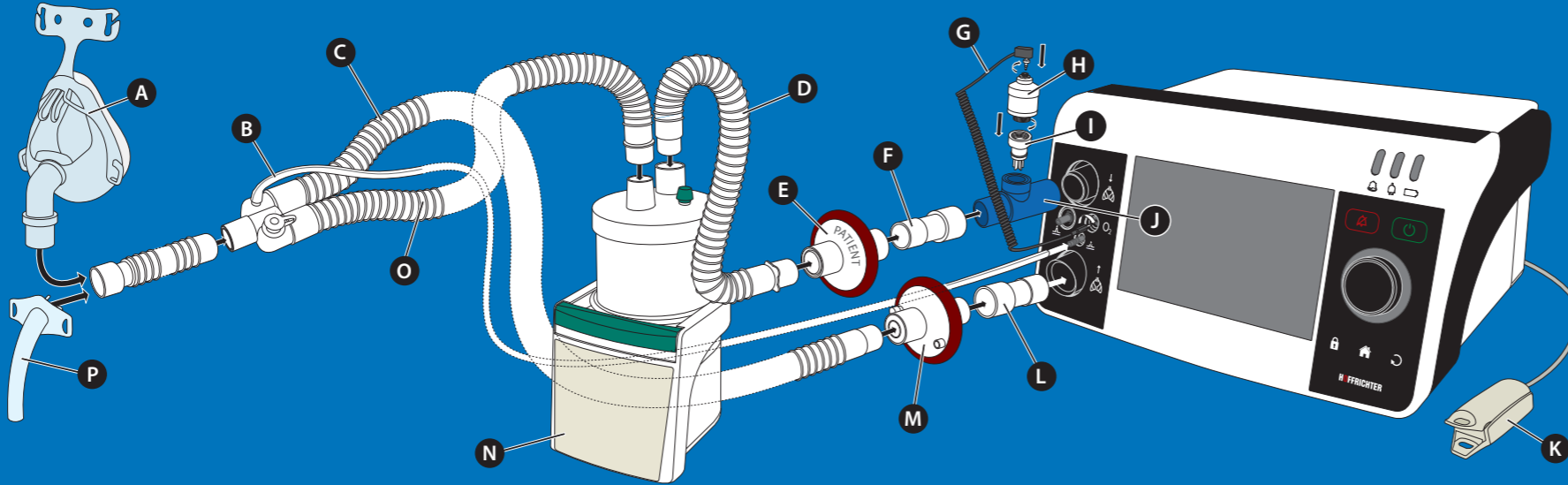
The HOFFRICHTER GmbH reserves the right to change or replace the brief instructions without prior notice. Make sure that you are always using the most current version. Please obtain information about the current version by contacting your provider or by visiting our website at www.hoffrichter.de.

HOFFRICHTER GmbH
Mettenheimer Straße 12/14
19061 Schwerin
Germany
Telephone: +49 38539925-0
Fax: +49385 39925-25
Email: info@hoffrichter.de
www.hoffrichter.de

Article no. 50000645
CARAT II pro 1.100 Kurz ENG_2014-09-25_02

SYSTEM STRUCTURE

- A Mask
- B Pressure measuring tube¹
- C Tube circuit (Expiration)
- D Connection tube¹
- E Bacterial filter¹
- F Bacterial filter adapter¹
- G Connector cable¹
- H FiO₂ sensor¹
- I FiO₂ sensor adapter¹
- J T adapter¹
- K SpO₂ sensor¹
- L Bacterial filter adapter¹
- M Bacterial filter¹
- N Humidifier¹
- O Tube circuit (Inspiration)
- P Tracheal cannula



¹ Optional

EXPLANATION OF THE TOOLBAR SYMBOLS

	Clinic mode active
	Home mode active
	High-priority alarm
	Medium-priority alarm
	Low-priority alarm
	Audio alarm paused
	Counter "Audio alarm paused"
	Keylock activated
	Spontaneous breathing detected
	SpO ₂ sensor connected
	Trigger lock "On"
	Trigger lock currently active

	A FiO ₂ sensor is connected and "FiO ₂ -Monitoring" setting has been set to "Internal" in the system screen.
	The "FiO ₂ -Monitoring" setting has been set to "External" in the system screen. Measurement of oxygen concentration is performed using an external FiO ₂ -Monitoring unit.
	A FiO ₂ sensor is connected, the "FiO ₂ -Monitoring" setting has been set to "Internal" in the system screen and oxygen is supplied.
	The "FiO ₂ -Monitoring" setting has been set to "External" in the system screen. Measurement of oxygen concentration is performed using an external FiO ₂ -Monitoring unit and oxygen is supplied.

	SD card is inserted in the device
	No SD card in the device
	PC is connected via the USB port
	Error detected
	Internal battery fully charged
	Internal battery being charged (1 bar \approx 20 % of charge)

IMPORTANT OPERATING ACTIONS

LOCK/UNLOCK KEYS

Press the safe key . flashes in the toolbar for about 5 s. Press the MFK during that time.

SWITCHING ON/OFF THE DEVICE

The device is switched on and off with the main switch on the back of the device.

START VENTILATION

Press the ON/OFF key to start the ventilation.

STOP VENTILATION

Press the ON/OFF key . Select "Yes" by turning the MFK. Press the MFK.

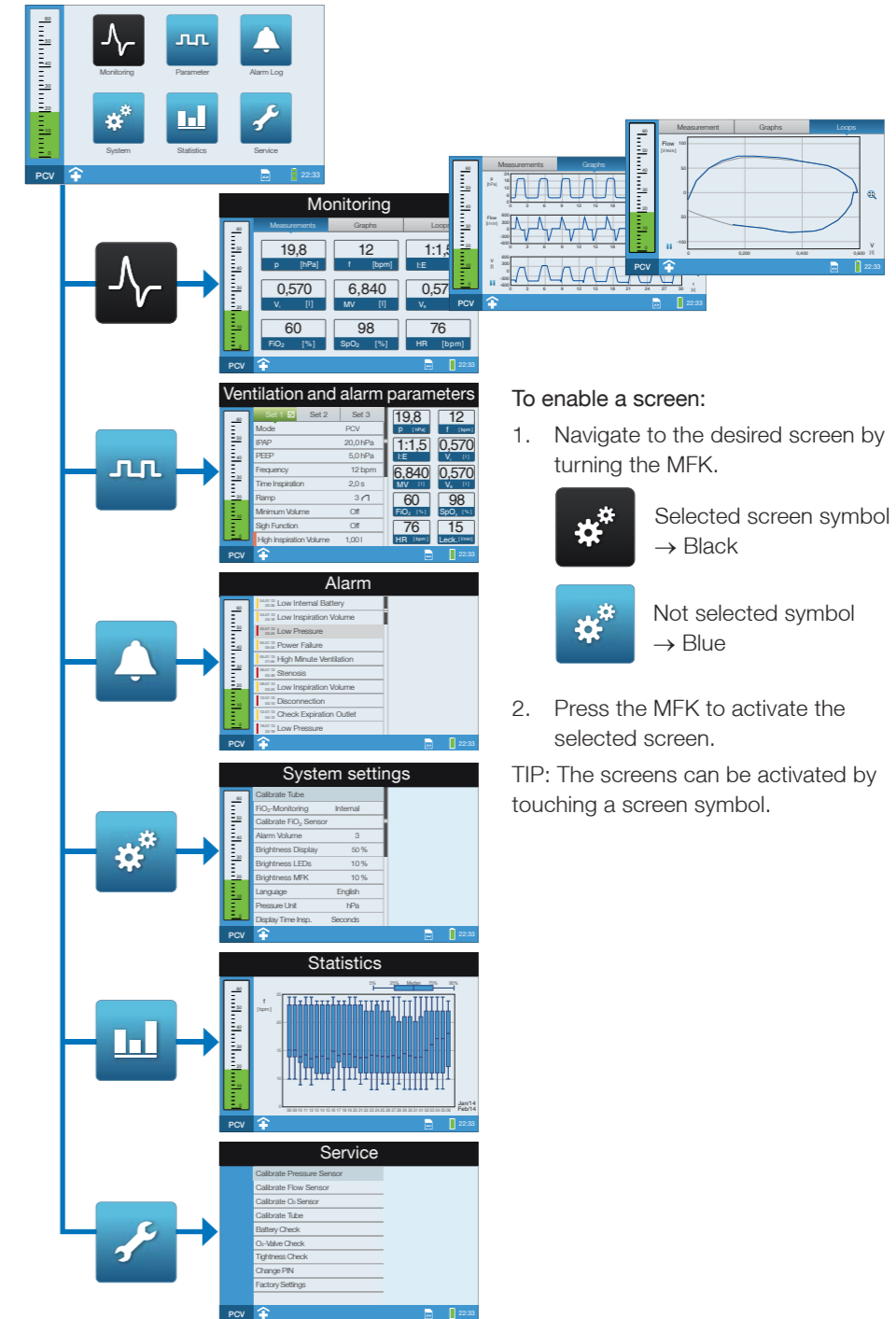
DISPLAY BATTERY STATUS

Touch the battery symbol

DISPLAY ERROR LIST

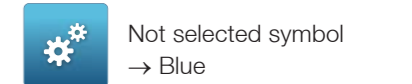
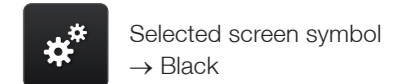
Touch the error symbol

MENU STRUCTURE



To enable a screen:

1. Navigate to the desired screen by turning the MFK.



2. Press the MFK to activate the selected screen.

TIP: The screens can be activated by touching a screen symbol.